






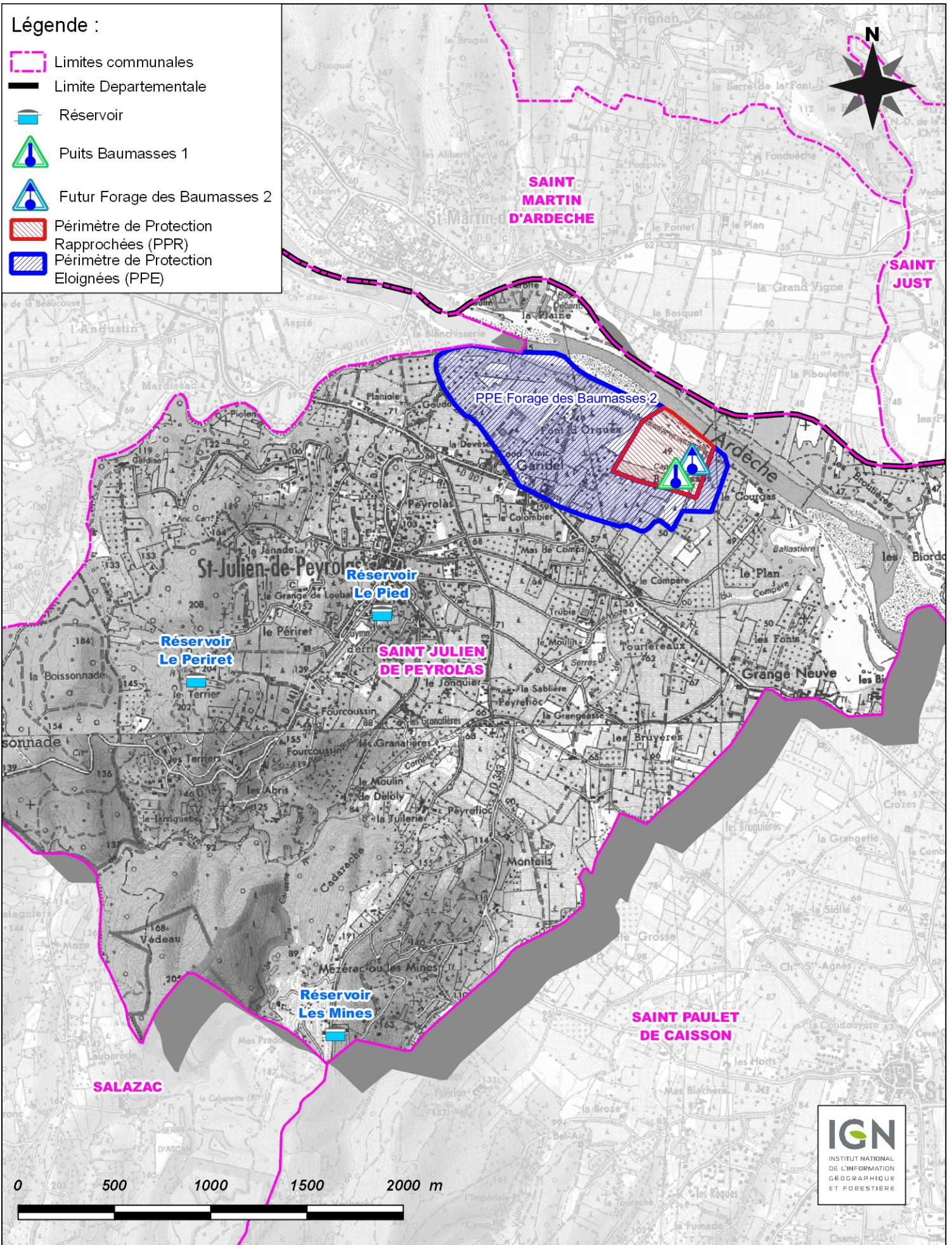


Légende :

-  Limites communales
-  Limite Departementale
-  Réservoir
-  Puits Baumasses 1
-  Futur Forage des Baumasses 2
-  Périmètre de Protection Rapprochées (PPR)
-  Périmètre de Protection Eloignées (PPE)



Département du Gard
Commune de SAINT JULIEN DE PEYROLAS

DUP	B	échelle 1/25 000
Octobre 2016		Plan N° 11.1

**Dossier d'Utilité Publique - Champ captant des Baumasses
Tracés du PPR et PPE sur fond topographique IGN**